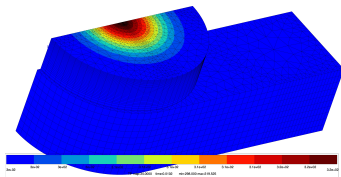


Experimental and numerical study of electric contactor durability

Post-Master (MS) student : **Fadoua Majid** (2015–2016/09/15)

Supervisors : G. Cailletaud, V. Esin, V. Yastrebov ; P. Testé, F. Houzé (GeePS Centrale-Supélec ; A. Bonhomme (Schneider Electric))

Industrial partner : Schneider Electric



- Construction of an electrical endurance data base
- Analysis of the local phenomena (melting, loss of material, damage)
- Simulation of solid–arc interaction : temperature field, plasticity and ageing
- Reduced model for contactor design