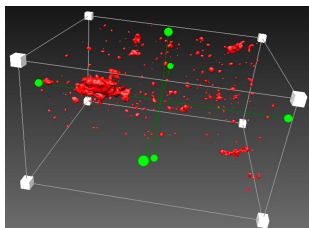


Study of failure mechanisms in 2219 aluminum welds by X-ray laminography

Post-Master (MS) student : **Driss El Khoukhi** (2015–2016/09/15)

Supervisors : T. Morgeneyer, Y. Madi ; J. Borzeix (EuroCryoSpace)

Industrial partner : EuroCryoSpace , Academic partner : ESRF



- Failure mechanism by liquation
- In-situ and ex-situ tests at the ESRF
- Effect of Cu and Fe on the weldability of aluminum 2219
- Quantitative analysis of laminography data